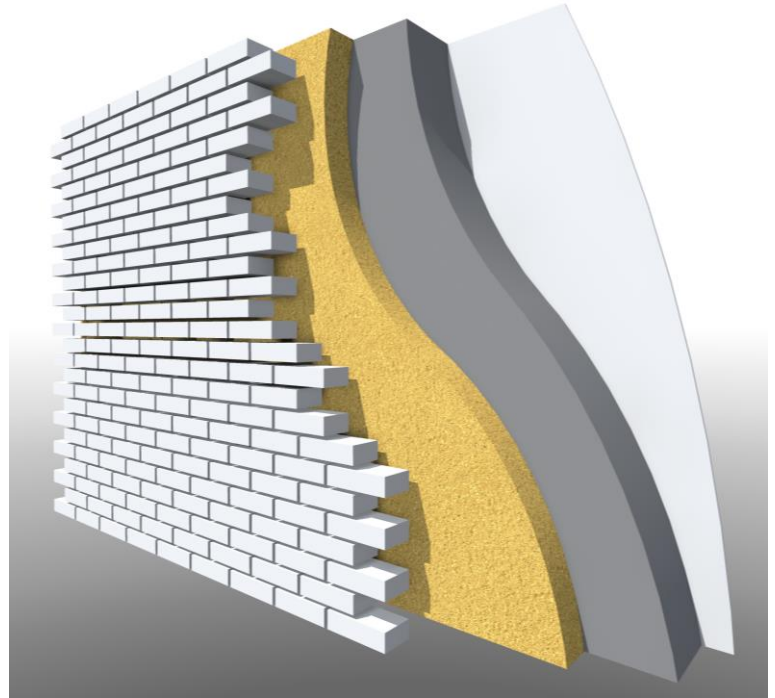
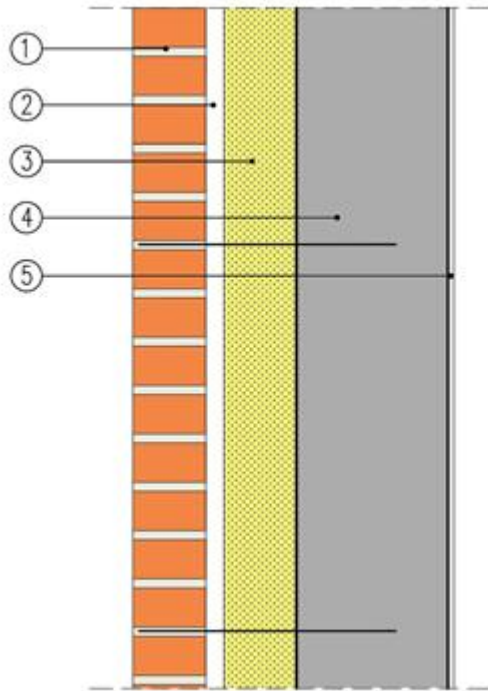


Spray polyurethane foam Purios

Example of spray closed-cell polyurethane foam on exterior walls.

Ventilated ceramic brick facades



Descriptions:

1. Ceramic brick wall
2. Ventilated gap – minimum 3 centimetres
3. Thermal insulation – sprayed polyurethane foam Purios
4. Solid wall
5. Plaster

Brick wall has to include stabilizing structure. Anchorage should be done before implementation of polyurethane spray foam. Add base coat (primer) if is needed to correct adhesive strength